



Capital Area Regional  
Transit Coordination Committee

# Coordinated Plan Update and Funding for Transit

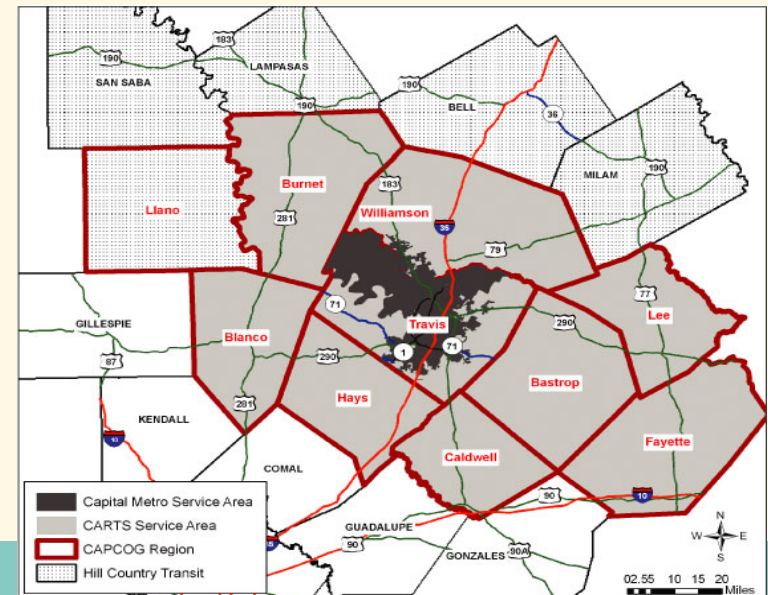
December 2011

# Regional Transit Coordination Committee (RTCC)

## Capital Area RTCC



- RTCC Covers 10 County CAPCOG Region
- Addresses State and Federal requirements related to transit coordination
- Represents 25+ Agencies and Organizations responsible for providing public transportation, providing health and human services or interested in coordination of transportation services:
  - Capital Metro
  - CARTS
  - HHS Agencies
  - Planning Agencies
  - Non Profits
  - Riders and Public
- Supported by TxDOT Grant
- Serves as Issue Area Group of CAN
- CAMPO serves as administrative lead



# Vision and Mission

Capital  
Area  
RTCC



- **VISION:**  
To provide full mobility and access to healthcare, human services, employment, education, commerce, social, and community services for all persons in the region.
- **MISSION STATEMENT:**  
To foster the development of a seamless public transportation system that achieves efficiencies, eliminates duplication, increases coordination, and addresses service gaps.



# Scope of Planning

## Capital Area RTCC



- **Federal and State requirements** relate specifically to coordination of transportation services across Federal and state funding silos (HHS vs. USDOT)
- Particular **focus on seniors, persons with disabilities, and low income** trying to access employment
- RTCC also plays a role in **coordination of general public transportation** across jurisdictional and provider boundaries
- “Regional Transportation Coordination Plan for the Capital Area” developed with broad input in 2006



# 2007-2011 Accomplishments

Capital  
Area  
RTCC



- Increased coordination among RTCC partners
- Partnering to address transit gaps
- New Services funded through JARC/New Freedom
  - Del Valle Bus Route
  - Foundation for the Homeless van
  - Faith in Action Caregivers computer equipment
  - Round Rock Reverse Commute Bus (in planning)
  - Easter Seals vans (in planning)
- Beta version of on-line resources database
- Transportation Solutions Training Survey
- Studies analyzing jurisdictional boundaries and funding, coordination best practices, impact of ADA paratransit changes, and other topics
- Public Outreach, Analysis, and Development of Draft Plan

# Plan Update Process

Capital  
Area  
RTCC



- ✓ November-March: Data collection (demographics, etc)
- ✓ November-March: Agency Interviews and Resources Inventory
- ✓ February: Survey
- ✓ February-April: Identify Possible Strategies
- ✓ April-May: Community Meetings on Needs and Strategies
- ✓ November: Draft Plan
- **December 2011-January 2012: Presentations**
  - February 2012: Submit Final Plan

# Draft Goals and Indicators

Capital  
Area  
RTCC



- Goals:

- **Goal 1:** Preserve and expand transportation services for the public, especially those services that meet the critical needs of the transportation disadvantaged.
- **Goal 2:** Maintain and improve the **quality** and safety of transportation services for the public.
- **Goal 3:** Secure formal state and local agency agreements and **identify and address** funding, regulatory, programmatic, attitudinal, and geographic **barriers** to implement coordinated transportation in the Capital Area.
- **Goal 4:** Increase the **efficiency** of transportation services for the public and human service clients.
- **Goal 5:** Increase **public awareness** of mobility options and **improve access** to transportation services for the public.
- **Goal 6:** Further state and regional efforts to **improve quality of life** and **reduce air pollution**.

# Draft Goals and Indicators

Capital  
Area  
RTCC



- Performance Indicators:

- More service is provided to more people
- System is accessible, seamless, and understood
- Region is fully leveraging available funding and partnerships
- System is cost effective and efficient
- System benefits air quality and quality of life

# Resources

Capital  
Area  
RTCC



- Services for the General Public
  - Capital Metro
  - CARTS
  - Texas State University
  - Round Rock Demand Response
  - The HOP
  - Lone Star Rail (in planning)
  - Greyhound
  - Arrow Trailways
  - Kerrville Bus Company
  - Amtrak



# Resources



- **Client-Focused Services**

- Non-emergency Medical Transportation
  - ❖ Texas Medical Transportation Program
  - ❖ American Cancer Society Road to Recovery
  - ❖ VA Services
- Low Income / Workforce Transportation
  - ❖ Foundation for the Homeless
  - ❖ Community Action Agencies
- Services targeted to elderly persons and persons with disabilities
  - ❖ Austin-Travis County Integral Care and other MHMR Centers
  - ❖ Faith in Action Care Givers
  - ❖ Austin Groups for the Elderly
  - ❖ Meals on Wheels and More/ Medi-wheels
- Educational Transportation Services

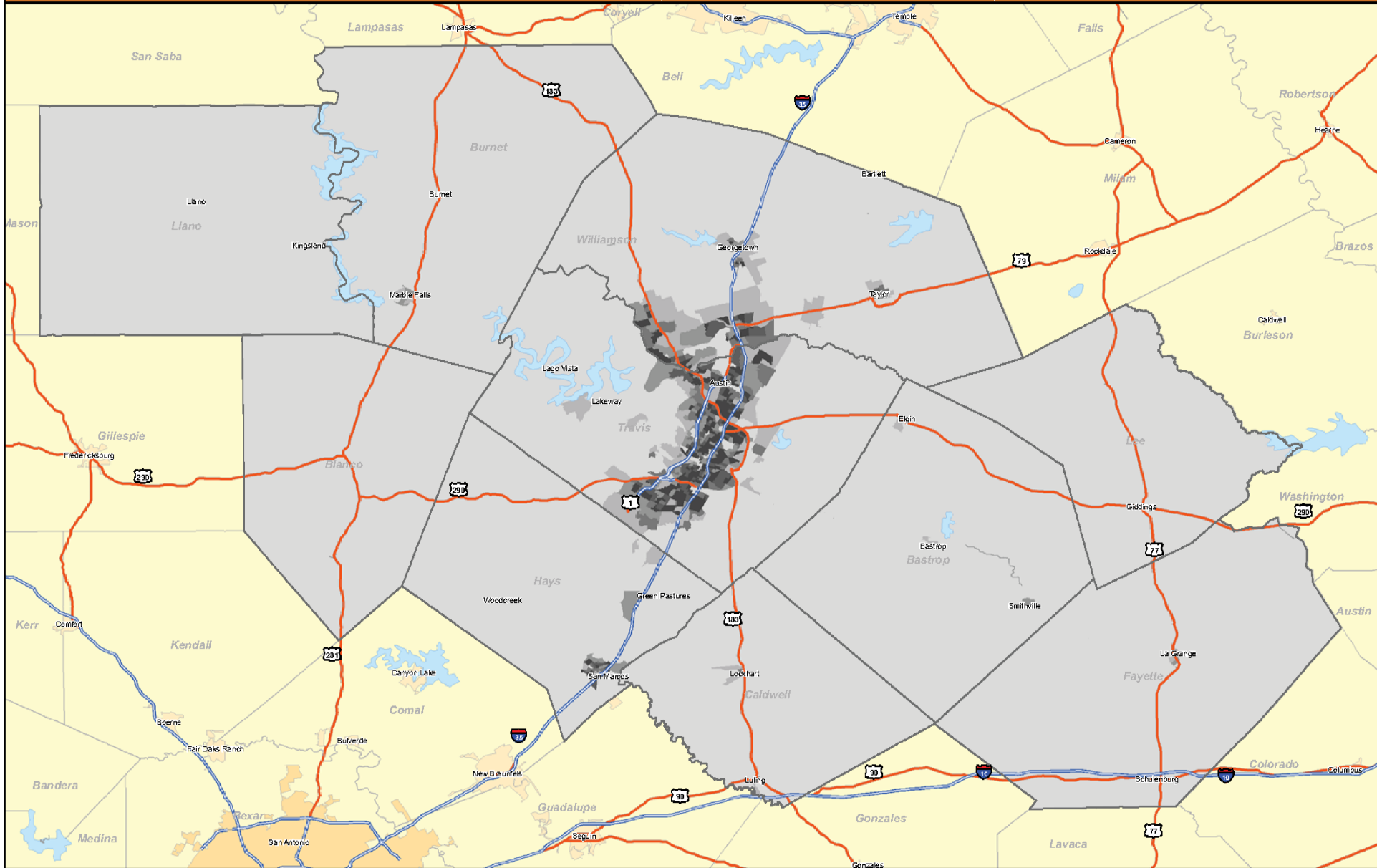
# Needs: Population and Demographics

Capital  
Area  
RTCC



- Overall Population Growth
  - 2000=1.3 million
  - 2010=1.8 million (35% increase)
- Population Distribution
  - 56% in Travis County
  - Outer counties growing faster
    - ❖ Williamson: +66%
    - ❖ Hays: +62%
    - ❖ Bastrop: +31%
    - ❖ Burnet: +30%
- Demographic Characteristics
  - Low Income and Households without Vehicles
  - Seniors and Persons with Disabilities
  - Low English-Proficiency Populations
  - Youth

# RTCC 10 COUNTY REGION: POPULATION DENSITY (PERSONS PER SQUARE MILE)



Persons Per Square Mile

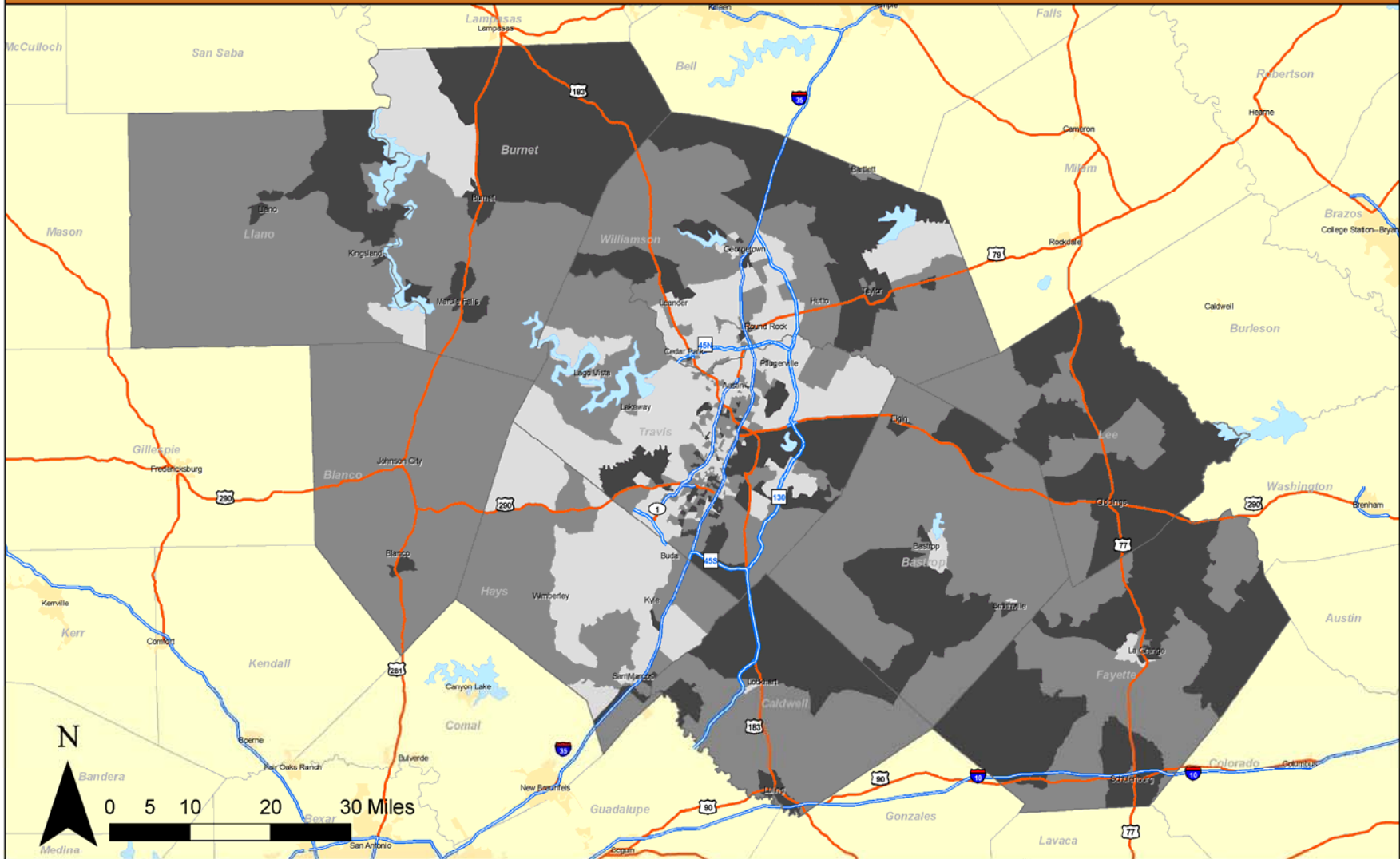
0 - 1,000  
1,000 - 2,000

3,000 - 4,000  
2,000 - 3,000

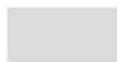
4,000 - 5,000  
5,000 +



# RTCC 10 COUNTY REGION: RELATIVE NEED BASED ON PERCENTAGE OF THE POPULATION DISPLAYING TRANSPORTATION NEEDS CHARACTERISTICS



### Relative Need



Low



Medium



High



Prepared for:  
**Capital Area RTCC**



Prepared by:

**KFH**  
GROUP

# Survey: Needs

Capital  
Area  
RTCC



- The RTCC conducted a **survey** of transit riders, health and human service agency clients, and the general public in February 2011
- **Survey Results:**
  - 508 Responses from throughout 10 counties
  - 12 Responses in Spanish
  - 60% of the respondents indicated at least one place in the region that they could not get to without driving. Top reasons:
    - ❖ No available transportation services (65%)
    - ❖ Service takes too long (37%)
    - ❖ No service on nights/ weekends (36%)
  - Top ranked neighborhood challenges to public transportation:
    - ❖ Nearest stop too far away (40%)
    - ❖ No sidewalks/ sidewalks poorly maintained (26%)
  - Top challenge among Spanish responses:
    - ❖ Concerns with personal safety (54.5%)

# Draft Strategies

Capital  
Area  
RTCC



1. Expand transit service to the entire region.
2. Maintain and increase service as the region continues to urbanize.
3. Address unserved destinations within existing transit service areas.
4. Meet accessibility needs of seniors, passengers with special medical needs, persons with disabilities.
5. Expand efforts to improve the coordinated volunteer network.
6. Work with developers, human service agencies, employers, and the medical community to locate facilities with transit availability in mind.
7. Improve Medicaid coordination.
8. Pursue Mobility Management and coordination opportunities.
9. Improve coordination and support a seamless family of public transportation services.
10. Expand coordination of student and workforce transportation and work to connect all of the region's residents to opportunity.



## Job Access/Reverse Commute and New Freedom Grants

Elderly Persons and Persons With  
Disabilities Grants

# FTA Program Purpose

Capital  
Area  
RTCC



- **JARC**—New public transportation services that connect low income/welfare recipients with job sites or provide reverse commute to suburban job sites
- **New Freedom**—New public transportation services above and beyond ADA

# Grant Administration

Capital  
Area  
RTCC



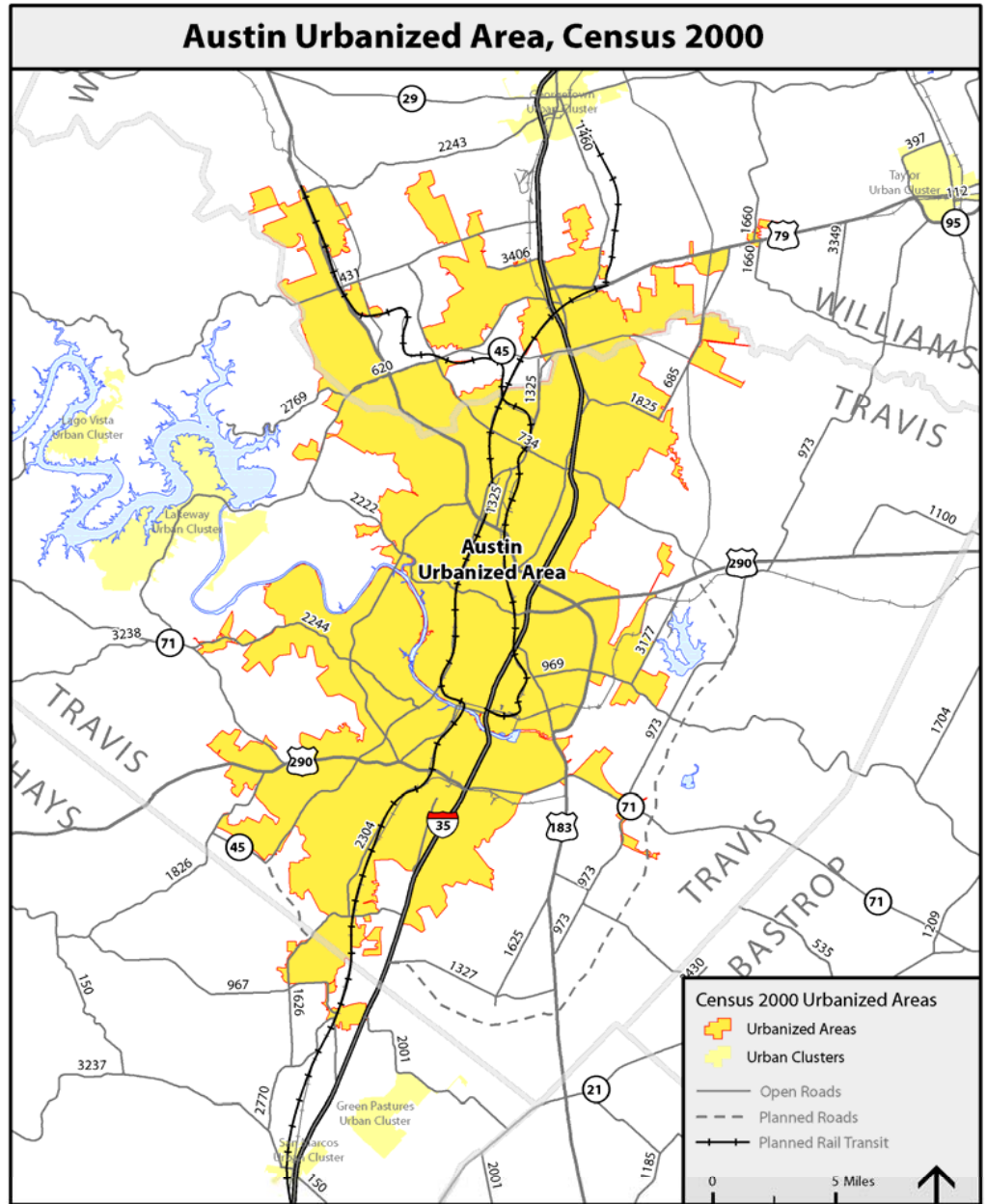
- **TxDOT Selects:**

- Elderly Persons and Persons with Disabilities projects (FTA Section 5310)
- JARC and New Freedom Projects in the rural/small urban areas

- **CAMPO/Capital Metro**

**Partnership:** Regional selection of JARC and New Freedom projects serving the urbanized area

# Capital Area RTCC



For Census 2000, a UA consists of contiguous, densely settled census block groups and census blocks that meet minimum population density requirements, along with adjacent densely settled census blocks that together encompass a population of at least 50,000 people.

G:\2\_Data\_Development\_and\_Maintenance\200-GIS\Maps\UAB Maps



# JARC /New Freedom Timeline

Capital  
Area  
RTCC



<b>December 2011- February 2011</b>	<b>Publicize Programs/ Meetings with Potential Applicants</b>
<b>January 10, 2011</b>	<b>Issue Project Call</b>
<b>January -February 2011</b>	<b>Pre-Application Workshops</b>
<b>February 24, 2011</b>	<b>Applications Due</b>
<b>February – March 2012</b>	<b>Technical Review and Scoring of Applications</b>
<b>April 2011</b>	<b>Board Presentation</b>
<b>May 2011</b>	<b>Public Hearing / CAMPO Board Award Decision</b>

# Eligibility Requirements

Capital  
Area  
RTCC



## Potential grant applicants

- Cities and Counties
- Capital Metro, CARTS, and other public transit providers
- MHMR Centers and other client transportation providers
- Workforce Centers
- Private providers and others
- Partnerships Encouraged

# Eligibility Requirements

Capital  
Area  
RTCC



## Other Requirements

- \$50,000 minimum award
- Reimbursement program
- Local match required (50% for Operations; 20% for Capital)
- Must meet all applicable FTA requirements
- Project must be an eligible project type under the program

# Funds Available

Capital  
Area  
RTCC



Fiscal Year	JARC	New Freedom	Total
2010 (remain.)	\$425,914	--	\$425,914
2011	\$467,663	\$138,385	\$606,048
2012 (Estimate)	\$467,663	\$219,822	\$687,486
<b>Total</b>	<b>\$1,361,241</b>	<b>\$358,207</b>	<b>\$1,719,448</b>

- 2010 figures reflects apportionment less previous awards and funding commitments. 2010 must be obligated by September 30, 2012
- 2012 figures are an estimate and assume 2012 apportionment = 2011 apportionment
- Includes Federal portion only
- Excludes 10% available for Grant Administration

# Projects Selected Previously

Capital  
Area  
RTCC



Easter Seals: passenger vans

Faith in Action Caregivers: Computer Scheduling System and Volunteer Gas Vouchers

Foundation for the Homeless: passenger van

City of Round Rock: Reverse Commute Bus Service

Capital Area Rural Transportation System (CARTS): Del Valle Connector Route

# Section 5310 - Elderly Individuals and Individuals with Disabilities

Capital  
Area  
RTCC



Program provides valuable assistance to agencies providing public transportation services for the special needs of elderly and persons with disabilities. This program provides capital equipment such as vehicles and communications equipment to public and non-profit agencies.

# Program Goals

Capital  
Area  
RTCC



The overall goal of this program is to provide and strengthen the public transportation services available to meet the special needs of the elderly and persons with disabilities.

- Promote the development and maintenance of a network of transportation services for the elderly and persons with disabilities throughout the state, in partnership with local stakeholders
- Promote and encourage local participation in decision-making
- Improve the efficiency, effectiveness, and safety of Section 5310 transit systems through the provision of technical assistance and the establishment of performance goals and management objectives; and

# Section 5310 Timeline

Capital  
Area  
RTCC



<b>January 17, 2012</b>	<b>Application is available.</b> <a href="http://ftp.dot.state.tx.us/pub/txdot-info/ptn/section5310_application.pdf">http://ftp.dot.state.tx.us/pub/txdot-info/ptn/section5310_application.pdf</a>
<b>February – June 2012</b>	<b>Various Workshops</b>
<b>July 31, 2012</b>	<b>Applications Due:</b> Public Transportation Division Attn: Vanessa Owens 125 E. 11 <sup>th</sup> St. Austin, Texas 78701-2483
<b>September 1, 2012</b>	<b>Project Selection Meeting:</b> Austin District 7901 N. IH35 Austin, Texas 78753 Contact: Vanessa Owens 512-374-5223
<b>October 1, 2012</b>	<b>Program of Projects Submitted to FTA</b>

# Questions?

Capital  
Area  
RTCC



Capital Area RTCC

c/o CAMPO

P.O. Box 1088

Austin, TX 78767

(512) 974-2275

[Stevie.Greathouse@CAMPOTexas.org](mailto:Stevie.Greathouse@CAMPOTexas.org)